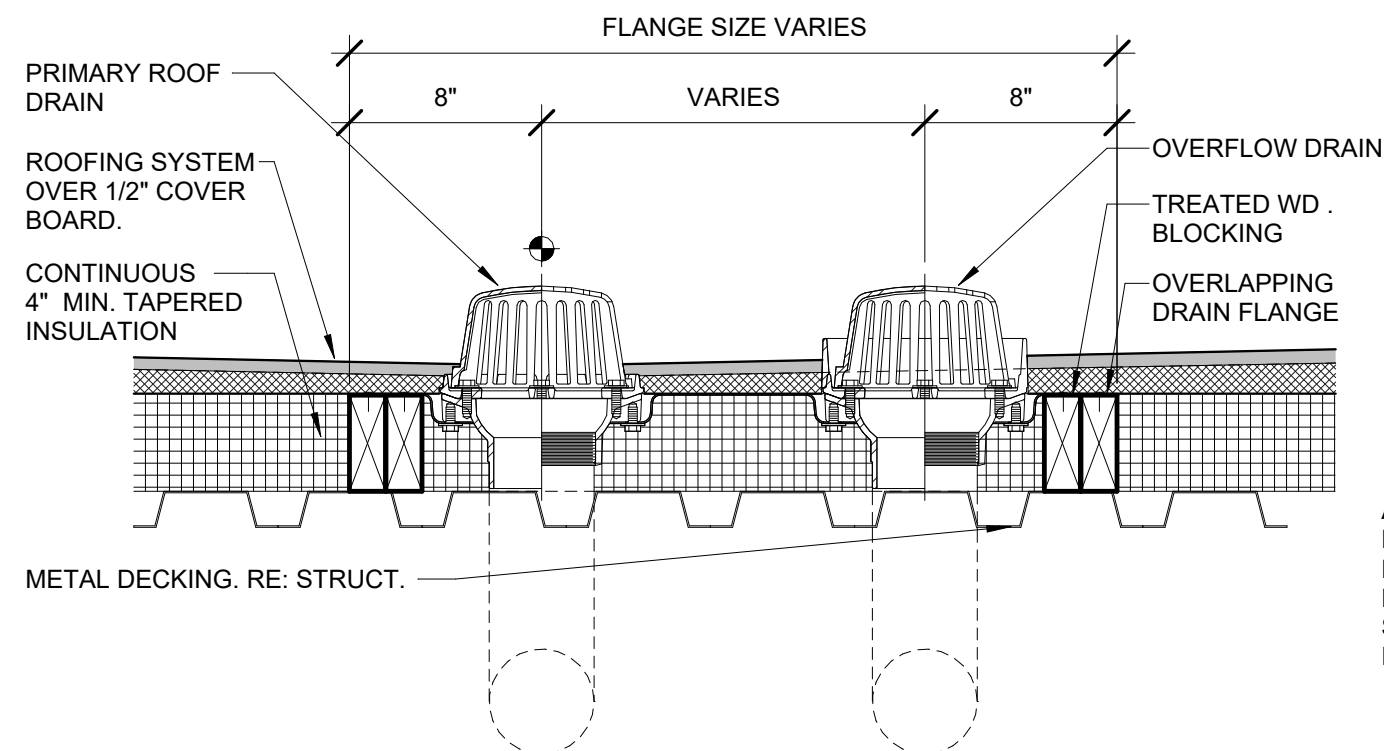
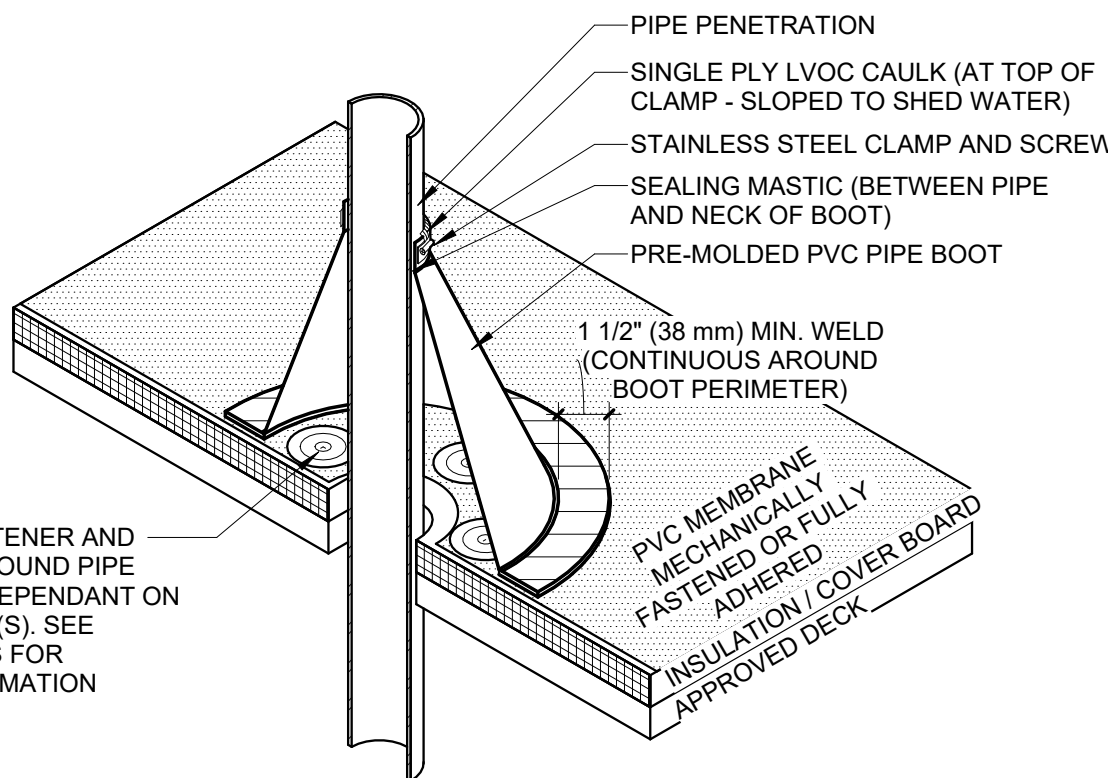


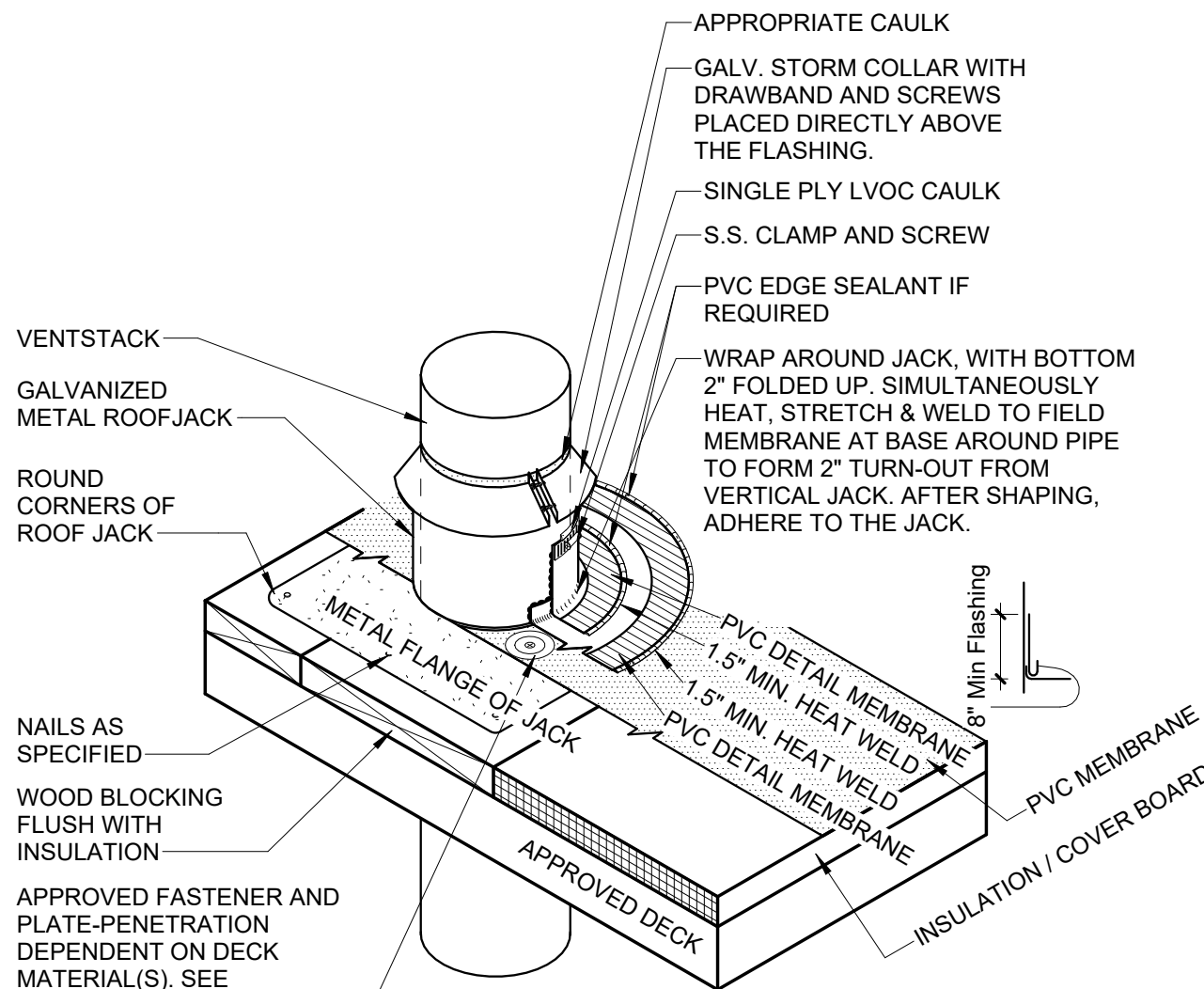
1 ROOF HATCH TYP.  
3/8" = 1'-0" | RE:1/A1.01



2 ROOF DRAIN AND OVERFLOW DRAIN TYP.  
1 1/2" = 1'-0"



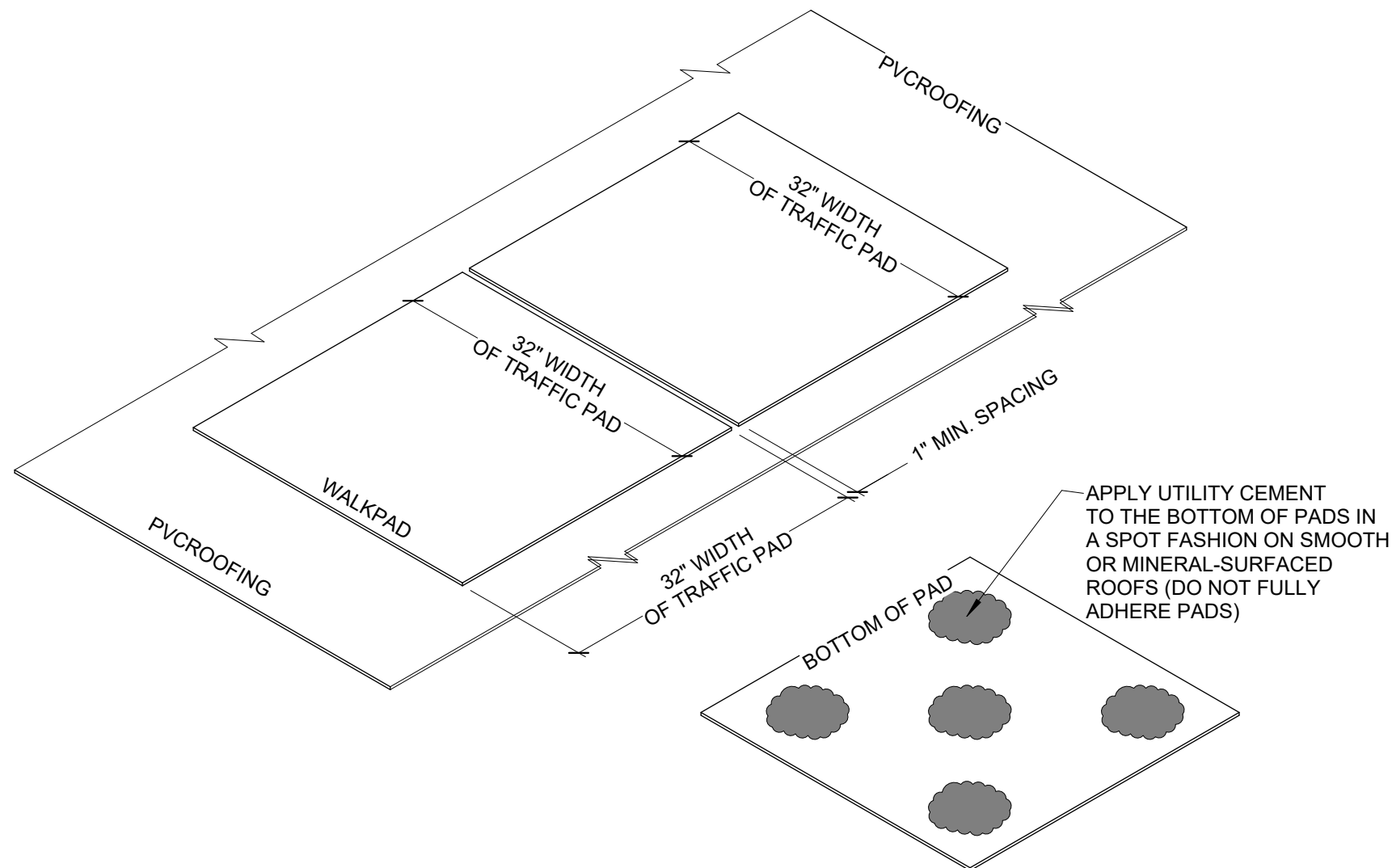
3 PVC PIPE BOOT TYP.  
1" = 1'-0"



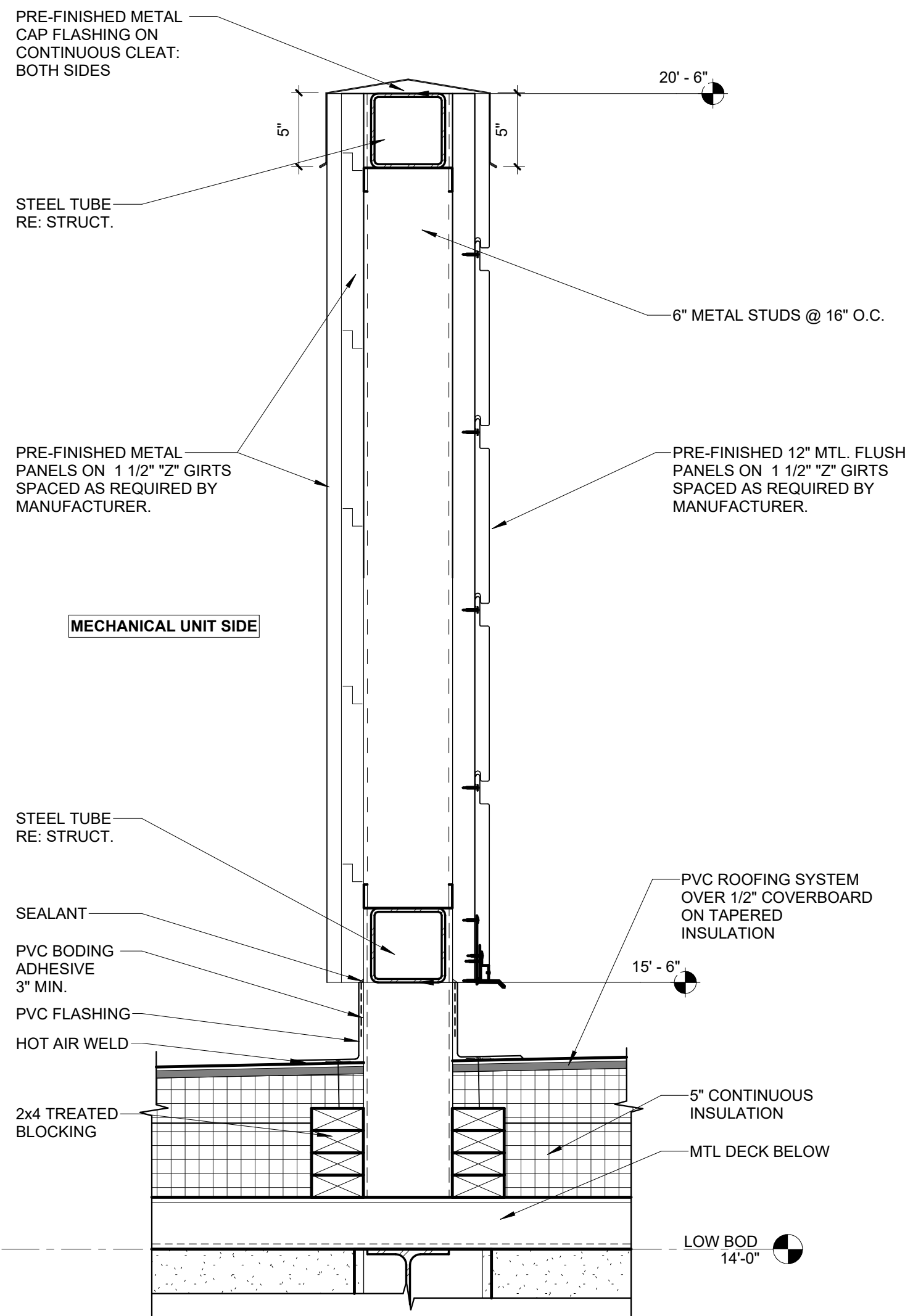
NOTES:

1. PVC EDGE SEALANT IS REQUIRED ON ALL CUT OR NON-ENCAPSULATED EDGES OF REINFORCED MEMBRANE. THIS INCLUDES FACTORY CUT MEMBRANE

4 VENT PIPE TYP.  
1" = 1'-0"



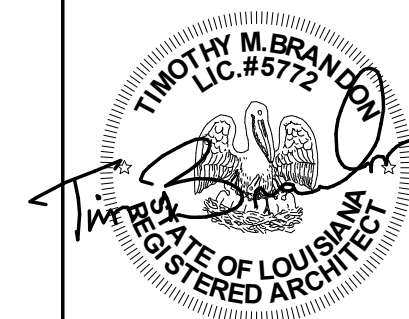
5 WALKPADS  
3/4" = 1'-0"



6 MECHANICAL SCREEN WALL  
1 1/2" = 1'-0" | RE:1/A1.03

TBA STUDIO  
ARCHITECTURE  
103 Cypress Street  
West Monroe, LA 71291  
Tel. 318.340.1550  
Fax. 318.998.1315  
www.tbastudio.com

TBA



SCHOOL OF CONSTRUCTION PRACTICE  
LAB BUILDING, UNIVERSITY OF  
LOUISIANA MONROE  
507 Filhiol Ave, Monroe, LA 71203

DRAWING REVISIONS

No.	Description	Date

DRAWN BY: KB, MU

CHECKED BY: CW

SHEET

A1.05

Date: NOV 2025

Project No.: 24-0059

File Name:

DESCRIPTION:

ROOF DETAILS